



2014 MAZDA3 SPECIFICATION DECK

26-Aug-13
Version 2014.6

PRODUCTION TIMING:

Job #1: 5DR - June 2013
Job #1: 4DR - July 2013

LINEUP:

Mazda3i SV 4DR
Mazda3i Sport 4DR
Mazda3i Touring 4DR
Mazda3i Grand Touring 4DR
Mazda3s Touring 4DR
Mazda3s Grand Touring 4DR
Mazda3i Sport 5DR
Mazda3i Touring 5DR
Mazda3i Grand Touring 5DR
Mazda3s Touring 5DR
Mazda3s Grand Touring 5DR

CONTENTS:	Page(s)
Product Summary	2-3
Equipment & Features	4-6
Packages & Options	7
Color & Trim	8-12
Specifications	13-14

4 DOOR PRODUCT SUMMARY

Mazda3i SV 4DR	Mazda3i Sport 4DR	Mazda3i Touring 4DR	Mazda3i Grand Touring 4DR	Mazda3s Touring 4DR	Mazda3s Grand Touring 4DR
	(adding to / in lieu of Mazda3i SV 4DR)	(adding to / in lieu of Mazda3i Sport 4DR)	(adding to / in lieu of Mazda3i Touring 4DR)	(adding to / in lieu of Mazda3i GT 4DR)	(adding to / in lieu of Mazda3s Touring 4DR)
<p>Functional / Powertrain</p> <ul style="list-style-type: none"> ● SKYACTIV-G 2.0L I4 with 155 HP ● SKYACTIV-MT 6-speed manual or SKYACTIV-DRIVE 6-speed automatic transmission ● Anti-lock brakes with Electronic Brakeforce Distribution and Brake assist ● Dynamic stability control ● Front and rear stabilizer bars ● Front-wheel drive ● Independent front MacPherson strut suspension ● Independent rear E-type multi-link suspension ● Power-assisted ventilated front & solid rear disc brakes ● Rack-and-pinion steering with variable assist (Electric Power Assisted Steering) ● Traction control system <p>Exterior</p> <ul style="list-style-type: none"> ● 16" steel wheels ● Gloss black dual power door mirrors (folding-type) ● Black beltline trim ● Body-color bumpers ● Body-color door handles ● Clear-lens halogen headlights ● Daytime running lights ● Dual exhaust behind rear valence ● High-mount center brake light - integrated with rear package shelf ● Integrated rear window radio antenna ● P205/60 R16 all-season tires ● SKYACTIV-Body ● SKYACTIV-Chassis ● Variable-intermittent windshield wipers <p>Interior</p> <ul style="list-style-type: none"> ● 12V power outlet(s) ● 3-spoke urethane steering wheel with illuminated controls (MT only) ● 4-speaker sound system (door-mounted full-range speakers) ● 5-passenger seating capacity ● Air conditioning with pollen filter ● AM/FM audio system with digital clock ● Auto door locks (speed sensitive and transmission sensitive) ● Auxiliary audio input jack ● Center console armrest w/ covered storage compartment ● Cloth door panel inserts ● Dome light ● Driver & passenger-side covered visor vanity mirror ● Fold-down rear seat; rear seat button release ● Front cupholders (2) ● Front door storage pockets with bottle holders ● Front seatback map pocket (passenger) ● Full carpeting (black); carpet floor mats ● Lever-type driver's seat lifter ● Passenger assist grips (3) ● Power door locks with 2-stage unlocking & central locking ● Power windows with driver-side one-touch down/up ● Push button start ● Rear door bottle holders ● Rear window defogger ● Reclining front bucket seats ● Remote hood, trunk and fuel door releases ● SV/Sport trim level type cloth-trimmed sport seats ● Tachometer (MT only); resettable trip odometers ● Tilt & telescopic steering column ● Trip computer (MT only) ● Urethane parking brake handle ● USB audio input(s) <p>Safety</p> <ul style="list-style-type: none"> ● 3-point safety-belts for all seat positions ● Advanced dual front air bags (SRS) ● Child-safety rear door locks ● Collapsible steering column (following air bag deployment) ● Dual front seat-mounted side-impact air bags ● Engine-immobilizer anti-theft system ● Front & rear side-impact door beams ● Front safety-belt pretensioners with force limiters ● Headrests, adjustable - front & rear - all seating positions ● Height adjustable front shoulder belt "B" pillar anchors ● LATCH rear seat child safety-seat lower anchors & upper tethers ● Rear door catch pins ● Remote keyless entry system w/ retractable key and panic mode and trunk release ● Side-impact air curtains (front & rear coverage) ● SKYACTIV-Body Ring Structure ● Tire pressure monitor system ● Trunk entrapment release system ● Whiplash-reducing front headrests 	<p>Functional / Powertrain</p> <ul style="list-style-type: none"> ● Body-split dual power door mirrors (folding-type) <p>Exterior</p> <ul style="list-style-type: none"> ● Alloy wheels ● Bright beltline trim ● Heated body-color dual power door mirrors w/ turn signal lamps ● Rear deck lip spoiler (body color) <p>Interior</p> <ul style="list-style-type: none"> ● 3-spoke urethane steering wheel with illuminated controls (AT & MT) ● 60/40 split fold-down rear seat ● Bluetooth hands free phone & audio speakers ● CD player ● Cruise control ● Front dual map lights ● Tachometer (AT and MT) ● Trip computer (AT and MT) <p>Safety</p> <ul style="list-style-type: none"> ● 3-point safety-belts for all seat positions ● Advanced dual front air bags (SRS) ● Child-safety rear door locks ● Collapsible steering column (following air bag deployment) ● Dual front seat-mounted side-impact air bags ● Engine-immobilizer anti-theft system ● Front & rear side-impact door beams ● Front safety-belt pretensioners with force limiters ● Headrests, adjustable - front & rear - all seating positions ● Height adjustable front shoulder belt "B" pillar anchors ● LATCH rear seat child safety-seat lower anchors & upper tethers ● Rear door catch pins ● Remote keyless entry system w/ retractable key and panic mode and trunk release ● Side-impact air curtains (front & rear coverage) ● SKYACTIV-Body Ring Structure ● Tire pressure monitor system ● Trunk entrapment release system ● Whiplash-reducing front headrests 	<p>Functional / Powertrain</p> <ul style="list-style-type: none"> ● Alloy wheels ● Bright beltline trim ● Heated body-color dual power door mirrors w/ turn signal lamps ● Rear deck lip spoiler (body color) <p>Exterior</p> <ul style="list-style-type: none"> ● Shark fin antenna <p>Interior</p> <ul style="list-style-type: none"> ● 6-way power driver's seat with manual lumbar adjustment ● Dual-zone (driver & front passenger) automatic climate control system ● Illuminated vanity mirrors (driver & passenger) ● Leatherette seats and door panel inserts ● MAZDA CONNECT™ infotainment system <ul style="list-style-type: none"> - 7" full-color touchscreen display - Multi-function Commander control - Infotainment system voice command - Rear-view camera - Mazda navigation system - Radio Broadcast Data System program information - Bose® 9 speaker surround sound system with Centerpoint® 2 and AudioPilot® 2 - SiriusXM satellite radio w/ 4 month subscription - HD radio - Aha™ internet radio integration - Pandora® internet radio integration - Stitcher™ internet radio integration - SMS text message audio delivery and reply - E911 automatic emergency notification ● Moonroof with one-touch open ● Overhead console w/ sunglasses holder ● Variable heated front seats (driver & passenger) <p>Safety</p> <ul style="list-style-type: none"> ● Blind Spot Monitoring with Rear Cross Traffic Alert ● Rearview camera (as part of MAZDA CONNECT™) 	<p>Functional / Powertrain</p> <ul style="list-style-type: none"> ● SKYACTIV-G 2.5L I4 with 184 HP ● SKYACTIV-DRIVE 6-speed automatic transmission ● Sport mode function on AT <p>Exterior</p> <ul style="list-style-type: none"> ● 18" alloy wheels ● Bi-xenon headlights with manual leveling ● Black gloss-type finish grille insert ● Halogen fog lights ● LED combination taillights ● LED daytime running lights ● P215/45 R18 all-season tires <p>Interior</p> <ul style="list-style-type: none"> ● Active Driving Display for driving information ● Moonroof with one-touch open (deleted) ● Paddle shifters on steering wheel <p>Safety</p> <ul style="list-style-type: none"> ● Auto On/Off headlights ● Bi-xenon headlights with auto leveling ● Auto-dimming interior mirror ● Perforated leather-trimmed seats ● Moonroof with one-touch open ● Rain sensing windshield wipers 	<p>Functional / Powertrain</p> <ul style="list-style-type: none"> ● Auto On/Off headlights ● Bi-xenon headlights with auto leveling <p>Exterior</p> <ul style="list-style-type: none"> ● Auto On/Off headlights ● Bi-xenon headlights with auto leveling <p>Interior</p> <ul style="list-style-type: none"> ● Auto-dimming interior mirror ● Perforated leather-trimmed seats ● Moonroof with one-touch open <p>Safety</p> <ul style="list-style-type: none"> ● Auto-dimming interior mirror ● Perforated leather-trimmed seats ● Moonroof with one-touch open 	
<p>Product Changes and Features Availability</p> <p>Features, options and package content subject to change.</p>					

5 DOOR PRODUCT SUMMARY

Mazda3i Sport 5DR	Mazda3i Touring 5DR <i>(adding to / in lieu of Mazda3i Sport 5DR)</i>	Mazda3i Grand Touring 5DR <i>(adding to / in lieu of Mazda3i Touring 5DR)</i>	Mazda3s Touring 5DR <i>(adding to / in lieu of Mazda3i GT 5DR)</i>	Mazda3s Grand Touring 5DR <i>(adding to / in lieu of Mazda3s Touring 5DR)</i>
<p>Functional / Powertrain</p> <ul style="list-style-type: none"> ● SKYACTIV-G 2.0L I4 with 155 HP ● SKYACTIV-MT 6-speed manual or SKYACTIV-DRIVE 6-speed automatic transmission ● Anti-lock brakes with Electronic Brakeforce Distribution and Brake assist ● Dynamic stability control ● Front and rear stabilizer bars ● Front-wheel drive ● Independent front MacPherson strut suspension ● Independent rear E-type multi-link suspension ● Power-assisted ventilated front & solid rear disc brakes ● Rack-and-pinion steering with variable assist (Electric Power Assisted Steering) ● Traction control system <p>Exterior</p> <ul style="list-style-type: none"> ● 16" steel wheels ● Antenna, roof-mounted short aerodynamic ● Black beltline trim ● Body-color bumpers ● Body-color door handles ● Body-color dual power door mirrors (folding-type) ● Clear-lens halogen headlights ● Daytime running lights ● Dual exhaust w/ bright tips ● High-mount center brake light - integrated with spoiler ● P205/60 R16 all-season tires ● Rear roof spoiler (body color) ● Rear window wiper ● SKYACTIV-Body ● SKYACTIV-Chassis ● Variable-intermittent windshield wipers <p>Interior</p> <ul style="list-style-type: none"> ● 12V power outlet (2) ● 3-spoke urethane steering wheel with illuminated controls ● 4-speaker sound system (door-mounted full-range speakers) ● 5-passenger seating capacity ● 60/40 split fold-down rear seat; rear seat button release ● Air conditioning with pollen filter ● AM/FM audio system with digital clock ● Auto door locks (speed sensitive and transmission sensitive) ● Auxiliary audio input jack ● Bluetooth hands free phone & audio ● CD player ● Center console armrest w/ covered storage compartment ● Cloth door panel inserts ● Cruise control ● Driver & passenger-side covered visor vanity mirror ● Front cupholders (2) ● Front door storage pockets with bottle holders ● Front dual map lights and dome light ● Front seatback map pocket (passenger) ● Full carpeting (black); carpet floor mats ● Lever-type driver's seat lifter ● Passenger assist grips (3) ● Power door locks with 2-stage unlocking & central locking ● Power windows with driver-side one-touch down/up ● Push button start ● Rear door bottle holders ● Rear window defogger ● Reclining front bucket seats ● Remote hood and fuel door releases ● Sport trim level type cloth-trimmed sport seats ● Tachometer; resettable trip odometers ● Tilt & telescopic steering column ● Trip computer ● Urethane parking brake handle ● USB audio input <p>Safety</p> <ul style="list-style-type: none"> ● 3-point safety-belts for all seat positions ● Advanced dual front air bags (SRS) ● Child-safety rear door locks ● Collapsible steering column (following air bag deployment) ● Dual front seat-mounted side-impact air bags ● Engine-immobilizer anti-theft system ● Front & rear side-impact door beams ● Front safety-belt pretensioners with force limiters ● Headrests, adjustable - front & rear - all seating positions ● Height adjustable front shoulder belt "B" pillar anchors ● LATCH rear seat child safety-seat lower anchors & upper tethers ● Rear door catch pins ● Remote keyless entry system w/ retractable key and panic mode ● Side-impact air curtains (front & rear coverage) ● SKYACTIV-Body Ring Structure ● Tire pressure monitor system ● Whiplash-reducing front headrests 	<p>Functional / Powertrain</p> <p><i>(adding to / in lieu of Mazda3i Sport 5DR)</i></p> <p>Exterior</p> <ul style="list-style-type: none"> ● Alloy wheels ● Bright beltline trim ● Heated body-color dual power door mirrors w/ turn signal lamps <p>Interior</p> <ul style="list-style-type: none"> ● Leather-wrapped brake handle ● Leather-wrapped gearshift knob ● Leather-wrapped steering wheel ● Mazda Advanced Keyless Entry ● Rear seat armrest w/ cupholders ● Premium cloth-trimmed sport seats <p>Safety</p> <ul style="list-style-type: none"> ● Blind Spot Monitoring with Rear Cross Traffic Alert 	<p>Functional / Powertrain</p> <p><i>(adding to / in lieu of Mazda3i Touring 5DR)</i></p> <p>Exterior</p> <ul style="list-style-type: none"> ● Shark fin antenna <p>Interior</p> <ul style="list-style-type: none"> ● 6-way power driver's seat with manual lumbar adjustment ● Dual-zone (driver & front passenger) automatic climate control system ● Illuminated vanity mirrors (driver & passenger) ● Leatherette seats and door panel inserts ● MAZDA CONNECT™ infotainment system <ul style="list-style-type: none"> - 7" full-color touchscreen display - Multi-function Commander control - Infotainment system voice command ● Rear-view camera ● Mazda navigation system ● Radio Broadcast Data System program information ● Bose® 9 speaker surround sound system with Centerpoint® 2 and AudioPilot® 2 ● SiriusXM satellite radio w/ 4 month subscription ● HD radio ● Aha™ internet radio integration ● Pandora® internet radio integration ● Stitcher™ internet radio integration ● SMS text message audio delivery and reply ● E911 automatic emergency notification ● Moonroof with one-touch open ● Overhead console w/ sunglasses holder ● Variable heated front seats (driver & passenger) <p>Safety</p> <ul style="list-style-type: none"> ● Rearview camera (as part of MAZDA CONNECT™) 	<p>Functional / Powertrain</p> <p><i>(adding to / in lieu of Mazda3i GT 5DR)</i></p> <ul style="list-style-type: none"> ● SKYACTIV-G 2.5L I4 with 184 HP ● SKYACTIV-DRIVE 6-speed automatic transmission ● Sport mode function on AT <p>Exterior</p> <ul style="list-style-type: none"> ● 18" alloy wheels ● Bi-xenon headlights with manual leveling ● Black gloss-type finish grille insert ● Halogen fog lights ● LED combination taillights ● LED daytime running lights ● P215/45 R18 all-season tires <p>Interior</p> <ul style="list-style-type: none"> ● Active Driving Display for driving information ● Moonroof with one-touch open (deleted) ● Paddle shifters on steering wheel 	<p>Functional / Powertrain</p> <p><i>(adding to / in lieu of Mazda3s Touring 5DR)</i></p> <p>Exterior</p> <ul style="list-style-type: none"> ● Auto On/Off headlights ● Bi-xenon headlights with auto leveling <p>Interior</p> <ul style="list-style-type: none"> ● Auto-dimming interior mirror ● Perforated leather-trimmed seats ● Moonroof with one-touch open <p>Safety</p> <ul style="list-style-type: none"> ● Pivoting Adaptive Front-lighting System ● Rain sensing windshield wipers
<p>Product Changes and Features Availability</p> <p>Features, options and package content subject to change.</p>				

EQUIPMENT AND FEATURES

	2.0L 4DR				2.5L 4DR		2.0L 5DR			2.5L 5DR	
	i SV	i Sport	i Touring	i Grand Touring	s Touring	s Grand Touring	i Sport	i Touring	i Grand Touring	s Touring	s Grand Touring
Engine & Transmission											
Active grille shutters (part of i-ELOOP)	---	---	---	---	---	OPT	---	---	---	---	OPT
Aluminum-alloy cylinder block and aluminum-alloy lower block	■	■	■	■	■	■	■	■	■	■	■
Exhaust, Stainless steel exhaust manifold, main silencer and pipe; dual outlet behind rear valence	■	■	■	■	■	■	---	---	---	---	---
Exhaust, Stainless steel exhaust manifold, main silencer and pipe; dual outlet with bright tip	---	---	---	---	---	---	■	■	■	■	■
Front Wheel Drive	■	■	■	■	■	■	■	■	■	■	■
i-ELOOP regenerative engine braking system	---	---	---	---	---	OPT	---	---	---	---	OPT
SKYACTIV-G 2.0L 4-cylinder engine	■	■	■	■	---	---	■	■	■	---	---
SKYACTIV-G 2.5L 4-cylinder engine	---	---	---	---	---	---	---	---	---	■	■
Transmission, SKYACTIV-DRIVE 6-speed AT with manual shift mode	Available	Available	Available	Available	■	■	Available	Available	Available	■	■
Transmission, SKYACTIV-MT 6-speed	■	■	■	■	---	---	■	■	■	---	---
Transmission, Sport mode on AT	---	---	---	---	---	---	---	---	---	■	■
Suspension & Chassis											
Brakes, Anti-lock System w/ Electronic Brakeforce Distribution & Brake-Assist	■	■	■	■	■	■	■	■	■	■	■
Brakes, Power-assisted ventilated front disc/solid rear disc	■	■	■	■	■	■	■	■	■	■	■
Dynamic Stability Control with Traction Control System	■	■	■	■	■	■	■	■	■	■	■
Front Suspension - Independent MacPherson strut with coil springs	■	■	■	■	■	■	■	■	■	■	■
Hill Launch Assist	■	■	■	■	■	■	■	■	■	■	■
Rear Suspension - Independent multi-link with coil springs	■	■	■	■	■	■	■	■	■	■	■
Stabilizer bar, front	■	■	■	■	■	■	■	■	■	■	■
Stabilizer bar, rear	■	■	■	■	■	■	■	■	■	■	■
Steering, Electric Power Assist System	■	■	■	■	■	■	■	■	■	■	■
Steering, Variable power-assisted rack-and-pinion steering	■	■	■	■	■	■	■	■	■	■	■
Tires & Wheels											
16-inch alloy wheels	---	---	■	■	---	---	---	■	■	---	---
16-inch steel wheels with full wheel covers	■	■	---	---	---	---	---	---	---	---	---
18-inch alloy wheels	---	---	---	---	■	■	---	---	---	■	■
205/60 R16 all-season steel-belted radial tires	■	■	■	■	---	---	■	■	■	---	---
215/45 R18 all-season steel-belted radial tires	---	---	---	---	---	---	---	---	---	■	■
Temporary spare tire	■	■	■	■	■	■	■	■	■	■	■
Exterior											
Antenna, Integrated rear window	■	■	■	■	■	■	---	---	---	---	---
Antenna, roof-mounted "shark fin"	---	---	OPT	■	■	■	---	OPT	■	■	■
Antenna, roof-mounted short aerodynamic	---	---	---	---	---	---	■	■	---	---	---
Beltline trim - black	---	---	---	---	---	---	■	■	---	---	---
Beltline trim - bright	---	---	■	■	■	■	---	---	■	■	■
Brake light - high-mount, integrated in trunk	---	---	■	■	■	■	---	---	---	---	---
Brake light - high-mount, spoiler-integrated	---	---	---	---	---	---	■	■	■	■	■
Daytime running lights	■	■	■	■	■	■	■	■	■	■	■
Daytime running lights - LED type	---	---	---	---	---	---	---	---	---	■	■
Fog lights - clear-lens halogen	---	---	---	---	■	■	---	---	---	■	■
Grille - gloss black finish	---	---	---	---	---	---	---	---	---	---	---
Grille - matte-type finish	■	■	■	■	---	---	■	■	■	---	---
Headlights - automatic on/off	---	---	---	---	---	---	---	---	---	---	■
Headlights - Bi-Xenon (high & low beam) High-Intensity Discharge headlights w/ auto leveling	---	---	---	---	---	---	---	---	---	---	■
Headlights - Bi-Xenon (high & low beam) High-Intensity Discharge headlights w/ manual leveling	---	---	---	---	■	---	---	---	---	■	---
Headlights - clear-lens halogen	■	■	■	■	---	---	■	■	■	---	---
Mirrors, dual power remote mirrors – gloss black, folding-type	■	---	---	---	---	---	---	---	---	---	---
Mirrors, dual power remote mirrors – body-color, folding-type	---	■	---	---	---	---	■	---	---	---	---
Mirrors, heated dual power remote mirrors – body-color, folding-type with turn signal lamps	---	---	■	■	■	■	---	■	■	■	■
Rear combination lamp - LED type	---	---	---	---	■	■	---	---	---	■	■
Spoiler, rear deck lip (body color)	---	---	■	■	■	■	---	---	---	---	---
Spoiler, rear roof (body-color)	---	---	---	---	---	---	■	■	■	■	■
Wipers - rear, 1-speed with fixed-intermittent	---	---	---	---	---	---	■	■	■	■	■
Wipers - windshield, 2-speed with variable-intermittent	---	---	---	---	---	---	■	■	■	■	---
Wipers - windshield, automatic rain-sensing (adjustable sensitivity) with 2-speed and variable-intermittent	---	---	---	---	---	---	---	---	---	---	■
Comfort & Convenience											
12-volt power outlet(s)	2	2	2 (1 w/OPT)	1	1	1	2	2 (1 w/OPT)	1	1	1
Air conditioning with pollen filter	■	■	■	■	■	■	■	■	■	■	■
Assist grips, passenger (3)	■	■	■	■	■	■	■	■	■	■	■
Auto-dimming interior mirror	---	---	---	---	---	---	---	---	---	---	---
Automatic climate control system with display - Dual-zone	---	---	OPT	---	---	---	---	OPT	■	■	■
Cargo area light	■	■	■	■	■	■	---	---	---	---	---
Cargo area light with ON/OFF switch	---	---	---	---	---	---	---	---	---	---	---
Center console armrest with covered storage compartments	■	■	■	■	■	■	■	■	■	■	■
Centralized door locking feature - driver's & front passenger's-side	■	■	■	■	■	■	■	■	■	■	■
Coat hooks (2)	■	■	■	■	■	■	■	■	■	■	■
Cruise control with steering wheel-mounted controls - illuminated	---	---	■	■	■	■	■	■	■	■	■

EQUIPMENT AND FEATURES

	2.0L 4DR				2.5L 4DR		2.0L 5DR			2.5L 5DR	
	i SV	i Sport	i Touring	i Grand Touring	s Touring	s Grand Touring	i Sport	i Touring	i Grand Touring	s Touring	s Grand Touring
Cup holders, rear door bottle holders (without storage pockets)	■	■	■	■	■	■	■	■	■	■	■
Cupholders, dual front	■	■	■	■	■	■	■	■	■	■	■
Cupholders, dual rear (integrated in armrest)	---	---	■	■	■	■	---	■	■	■	■
Dome light	■	■	■	■	■	■	■	■	■	■	■
Driver-side covered visor vanity mirror	■	■	---	---	---	---	■	■	---	---	---
Driver-side illuminated covered visor vanity mirror	---	---	OPT	■	■	■	---	OPT	■	■	■
Driver-side power window switches	■	■	■	■	■	■	■	■	■	■	■
Footrest, driver-side	■	■	■	■	■	■	■	■	■	■	■
Front dual map lights	---	---	■	■	■	■	---	---	---	---	---
Heater/defroster with multiple speed fan	■	■	■	■	■	■	■	■	■	■	■
Mazda Advanced Keyless Entry	---	---	■	■	■	■	---	---	---	---	---
Moonroof, power sliding-glass ("one-touch" open feature) with interior sunshade	---	---	---	■	---	■	---	---	---	---	■
Overhead console w/ sunglasses holder	---	---	OPT	■	■	■	---	OPT	■	■	■
Paddle shifters on steering wheel	---	---	---	---	■	■	---	---	---	---	---
Passenger-side covered visor vanity mirror	■	■	■	---	---	---	■	■	---	---	---
Passenger-side illuminated covered visor vanity mirror	---	---	OPT	■	■	■	---	OPT	■	■	■
Power door lock switches - driver's-side & front passenger-side	■	■	■	■	■	■	■	■	■	■	■
Power door locks - auto door locks (speed sensitive and transmission sensitive)	■	■	■	■	■	■	■	■	■	■	■
Power door locks with 2-stage unlocking	■	■	■	■	■	■	■	■	■	■	■
Push button start	■	■	■	■	■	■	■	■	■	■	■
Rear cabin light	---	---	■	■	■	■	---	---	---	---	---
Rear heater ducts	■	■	■	■	■	■	■	■	■	■	■
Rear window defogger	■	■	■	■	■	■	■	■	■	■	■
Rearview mirror, day/night	■	■	■	■	■	■	■	■	■	■	■
Remote fuel door release	■	■	■	■	■	■	■	■	■	■	■
Remote hood release	■	■	■	■	■	■	■	■	■	■	■
Remote keyless illuminated entry system w/ "answer back" feature	■	■	■	■	■	■	■	■	■	■	■
Remote trunk lid release (interior switch)	■	■	■	■	■	■	---	---	---	---	---
Steering column, tilt & telescopic	■	■	■	■	■	■	■	■	■	■	■
Steering wheel-mounted controls - illuminated	MT only	■	■	■	■	■	■	■	■	■	■
Storage pockets, front door with bottle holders	■	■	■	■	■	■	■	■	■	■	■
Storage, front seatback map pocket (passenger)	■	■	■	■	■	■	■	■	■	■	■
Storage, glove compartment	■	■	■	■	■	■	■	■	■	■	■
Vinyl-covered sunvisors with extensions	■	■	■	■	■	■	■	■	■	■	■
Windows, power with driver-side one-touch down/up feature	■	■	■	■	■	■	■	■	■	■	■
Seating & Trim											
5-passenger seating capacity	■	■	■	■	■	■	■	■	■	■	■
Cargo area cover, rigid (removable)	---	---	---	---	---	---	---	---	---	---	---
Center floor console trim - black	■	■	■	■	■	■	■	■	■	■	■
Decoration panel - piano black	■	■	---	---	---	---	---	---	---	---	---
Decoration panel - satin silver	---	---	---	---	---	---	---	---	---	---	---
Door handle surround, inner - black	■	---	---	---	---	---	---	---	---	---	---
Door handle surround, inner - piano black	---	---	---	---	---	---	---	---	---	---	---
Door handle, inner - satin silver	---	---	---	---	---	---	---	---	---	---	---
Door handle, inner - silver	■	---	---	---	---	---	---	---	---	---	---
Door trim, cloth - upper black or sand; lower black	■	■	■	---	---	---	■	■	---	---	---
Door trim, synthetic leather - upper black or almond; lower black	---	---	---	---	---	---	---	---	---	---	---
Door trim, synthetic leather - upper black; lower black	---	---	---	■	■	---	---	---	■	■	---
Floor mats, front and rear - carpeted	■	■	■	■	■	■	■	■	■	■	■
Floor-mounted gear shift lever (A/T)	Available	Available	Available	Available	---	---	Available	Available	Available	---	---
Floor-mounted gear shift lever (M/T)	---	---	---	---	---	---	---	---	---	---	---
Full cargo area trim	■	■	■	■	■	■	■	■	■	■	■
Full carpeting - black	■	■	■	■	■	■	■	■	■	■	■
Headrests, adjustable - front & rear - all seating positions	■	■	■	■	■	■	■	■	■	■	■
Headrests, whiplash-reducing active front headrests	■	■	■	■	■	■	■	■	■	■	■
HVAC center vent bezel - satin silver	---	---	---	---	---	---	---	---	---	---	---
HVAC center vent bezel - silver	■	■	■	---	---	---	■	■	---	---	---
HVAC control dial trim ring - black	---	---	---	---	---	---	---	---	---	---	---
HVAC control dial trim ring - satin silver	---	---	■	■	■	■	---	■	■	■	■
HVAC side vent bezel - satin silver	---	---	---	---	---	---	---	---	---	---	---
HVAC side vent bezel - silver	■	---	---	---	---	---	■	■	---	---	---
HVAC side vent surround - black	■	---	---	---	---	---	---	---	---	---	---
HVAC side vent surround - piano black	---	---	■	■	■	■	---	■	■	■	■
Interior trim color: black	■	■	■	■	■	■	■	■	■	■	■
Molded cloth headliner - gray	■	■	■	■	■	■	■	■	■	■	■
Parking brake handle, leather with red stitching; black	---	---	---	---	---	---	---	---	---	---	---
Parking brake handle, urethane	■	■	---	---	---	---	■	---	---	---	---
Rear seat, 60/40 split fold-down	---	---	■	■	■	■	---	■	■	■	■
Rear seat, bench fold-down	---	---	---	---	---	---	---	---	---	---	---
Seats, 6-way power driver's seat with manual lumbar adjustment	---	---	---	■	■	■	---	---	■	■	■
Seats, cloth - black or sand	■	---	---	---	---	---	■	---	---	---	---
Seats, cloth - premium black or sand	---	---	■	---	---	---	---	---	---	---	---
Seats, perforated leather - black or almond	---	---	---	---	---	---	---	---	---	---	---
Seats, leatherette - black	---	---	---	■	---	---	---	---	■	---	---
Seats, reclining front bucket seats	■	■	■	■	■	■	■	■	■	■	■
Seats, variable heated front seats (driver & passenger)	---	---	---	---	---	---	---	---	---	---	---
Shift boot surround - satin silver	---	---	OPT	■	■	■	---	OPT	■	■	■
Shift boot surround - silver	■	■	■	---	---	---	■	---	---	---	---
Shift knob - leather-wrapped with red stitching; black	---	---	■	■	■	■	---	■	■	■	■

EQUIPMENT AND FEATURES

	2.0L 4DR				2.5L 4DR		2.0L 5DR			2.5L 5DR	
	i SV	i Sport	i Touring	i Grand Touring	s Touring	s Grand Touring	i Sport	i Touring	i Grand Touring	s Touring	s Grand Touring
Shift knob - urethane ; black	■	■	---	---	---	---	■	---	---	---	---
Shift panel trim - carbon fiber appearance	■	■	■	---	---	---	■	■	---	---	---
Shift panel trim - piano black	---	---	OPT	■	■	■	---	OPT	■	■	■
Steering wheel spoke - black	■	■	---	---	---	---	■	---	---	---	---
Steering wheel spoke - satin silver	---	---	---	■	■	■	---	---	■	■	■
Steering wheel, 3-spoke leather wrapped with red stitching; black	---	---	■	■	■	■	---	■	■	■	■
Steering wheel, 3-spoke urethane	■	■	---	---	---	---	■	---	---	---	---
Audio/Phone/Entertainment/Navigation Systems											
4-speaker sound system - full-range door-mounted type	■	■	■	---	---	---	■	■	---	---	---
7" full-color touchscreen display	---	---	OPT	■	■	■	---	OPT	■	■	■
Aha™ internet radio integration	---	---	OPT	■	■	■	---	OPT	■	■	■
AM/FM audio system with digital clock	■	■	■	■	■	■	■	■	■	■	■
Auxiliary audio input jack (3.5mm TRS)	■	■	■	■	■	■	■	■	■	■	■
Bluetooth hands free phone & audio	---	■	■	■	■	■	■	■	■	■	■
Bose® 9 speaker surround sound audio system with Centerpoint® 2 and AudioPilot® 2	---	---	OPT	■	■	■	---	OPT	■	■	■
CD Player	---	■	■	■	■	■	■	■	■	■	■
E911 automatic emergency notification	---	---	OPT	■	■	■	---	OPT	■	■	■
HD radio	---	---	OPT	■	■	■	---	OPT	■	■	■
Infotainment system voice command	---	---	OPT	■	■	■	---	OPT	■	■	■
Mazda navigation system	---	---	OPT	■	■	■	---	OPT	■	■	■
Multi-function Commander control	---	---	OPT	■	■	■	---	OPT	■	■	■
Pandora® internet radio integration	---	---	OPT	■	■	■	---	OPT	■	■	■
Radio Broadcast Data System program information	---	---	OPT	■	■	■	---	OPT	■	■	■
Sirius satellite radio w/ 4 month subscription	---	---	OPT	■	■	■	---	OPT	■	■	■
SMS text message audio delivery and reply	---	---	OPT	■	■	■	---	OPT	■	■	■
Stitcher™ internet radio integration	---	---	OPT	■	■	■	---	OPT	■	■	■
USB audio input(s)	1	1	1 (2 w/OPT)	2	2	2	1	1 (2 w/OPT)	2	2	2
Instrumentation											
Active driving display for driving information	---	---	---	---	■	■	---	---	---	■	■
Gauges & controls illumination dimming control - dial-type	■	■	■	■	■	■	■	■	■	■	■
Gauges, analog tachometer and digital speedometer	---	---	---	---	■	■	---	---	---	■	■
Gauges, digital tachometer and analog speedometer	■	■	■	■	---	---	■	■	■	---	---
Tachometer	MT only	■	■	■	■	■	■	■	■	■	■
Trip computer, four-function including current and average fuel economy, distance-to-empty, and average vehicle speed	MT only	■	■	■	■	■	■	■	■	■	■
Trip odometers, resettable (2)	■	■	■	■	■	■	■	■	■	■	■
Warning lights: brake system, high-beam headlights, turn signals/hazard warning on, check engine, engine oil pressure, engine coolant temp, battery charge, defogger-on, air bag/front seat belt pretensioner system, door-ajar, low fuel, Anti-lock Brake System, cruise control on, tire pressure monitoring system	■	■	■	■	■	■	■	■	■	■	■
Safety & Security											
3-point safety belts for all seating positions (2 front; 3 rear)	■	■	■	■	■	■	■	■	■	■	■
5-mph bumpers	■	■	■	■	■	■	■	■	■	■	■
Advanced dual front air bags (SRS) - with crash-zone & passenger weight sensors (Mazda Advanced Restraint System)	■	■	■	■	■	■	■	■	■	■	■
Blind Spot Monitoring with Rear Cross Traffic Alert	---	---	■	■	■	■	---	■	■	■	■
Brakes, Anti-lock System w/ Electronic Brakeforce Distribution & Brake-Assist	■	■	■	■	■	■	■	■	■	■	■
Child-safety rear door locks	■	■	■	■	■	■	■	■	■	■	■
Collapsible steering column (following air bag deployment)	■	■	■	■	■	■	■	■	■	■	■
Dual front side-impact air bag supplemental restraint system (SRS) - front seat-mounted (front coverage)	■	■	■	■	■	■	■	■	■	■	■
Dynamic Stability Control with Traction Control System	■	■	■	■	■	■	■	■	■	■	■
Engine immobilizer anti-theft system	■	■	■	■	■	■	■	■	■	■	■
Front safety-belt pretensioners with force limiters	■	■	■	■	■	■	■	■	■	■	■
Headlights - Adaptive Front-lighting System	---	---	---	---	---	---	---	---	---	---	---
Headrests, adjustable - front & rear - all seating positions	■	■	■	■	■	■	■	■	■	■	■
Height adjustable front shoulder belt "B" pillar anchors	■	■	■	■	■	■	■	■	■	■	■
High Beam Control	---	---	---	---	---	OPT	---	---	---	---	OPT
Horn - single type	■	■	■	■	■	■	■	■	■	■	■
Keyless remote panic button feature (on key fob)	■	■	■	■	■	■	■	■	■	■	■
Lane Departure Warning System	---	---	---	---	---	OPT	---	---	---	---	OPT
LATCH rear seat child safety-seat lower anchors & upper tethers	■	■	■	■	■	■	■	■	■	■	■
Power door locks - auto door locks (speed sensitive and transmission sensitive)	■	■	■	■	■	■	■	■	■	■	■
Rear-view camera	---	---	OPT	■	■	■	---	OPT	■	■	■
Side air curtains - front & rear coverage	■	■	■	■	■	■	■	■	■	■	■
Side-impact door beams - front and rear	■	■	■	■	■	■	■	■	■	■	■
SKYACTIV-Body Ring Structure	■	■	■	■	■	■	■	■	■	■	■
Smart City Brake Support	---	---	---	---	---	OPT	---	---	---	---	OPT
Tire Pressure Monitoring System	■	■	■	■	■	■	■	■	■	■	■
Trunk entrapment release system	---	---	---	---	---	---	---	---	---	---	---
Whiplash-reducing front seat headrests	■	■	■	■	■	■	■	■	■	■	■
Wipers - windshield, automatic rain-sensing (adjustable sensitivity) with 2-speed and variable-intermittent	---	---	---	---	---	■	---	---	---	---	■

PACKAGES AND OPTIONS

Packages	Mazda3i 4-Door				Mazda3s 4-Door		Mazda3i 5-Door			Mazda3s 5-Door	
	<i>i SV</i>	<i>i Sport</i>	<i>i Touring</i>	<i>i Grand Touring</i>	<i>s Touring</i>	<i>s Grand Touring</i>	<i>i Sport</i>	<i>i Touring</i>	<i>i Grand Touring</i>	<i>s Touring</i>	<i>s Grand Touring</i>
(1MR) Moonroof Package 1 ¹	--	--	OPT	--	--	--	--	OPT	--	--	--
(2MR) Moonroof Package 2 ²	--	--	OPT	--	--	--	--	OPT	--	--	--
(1TE) Technology Package	--	--	OPT	--	--	--	--	OPT	--	--	--
(3TE) Technology Package	--	--	--	--	--	OPT	--	--	--	--	OPT
(JCR) Soul Red Paint	OPT	OPT	OPT	OPT	OPT	OPT	OPT	OPT	OPT	OPT	OPT
(JCP) Snowflake White Paint	OPT	OPT	OPT	OPT	OPT	OPT	OPT	OPT	OPT	OPT	OPT

Moonroof Package 1 (1MR)¹: Power moonroof with one-touch open, overhead console w/ sunglasses holder, illuminated vanity mirrors (driver and passenger)

Moonroof Package 2 (2MR)²: Power moonroof with one-touch open

Technology Package (1TE): Dual-zone (driver & front passenger) automatic climate control system, overhead console w/ sunglasses holder, illuminated vanity mirrors (driver and passenger), shark fin antenna, MAZDA CONNECT™ infotainment system: 7" full-color touchscreen display, multi-function Commander control, infotainment system voice command, rearview camera, Mazda navigation system, Bose® 9 speaker surround sound system with Centerpoint® 2 and AudioPilot® 2, SiriusXM satellite radio w/ 4 month subscription, HD radio, Aha™ internet radio integration, Pandora® internet radio integration, Stitcher™ internet radio integration, SMS text message audio delivery and reply, E911 automatic emergency notification

Technology Package (3TE): i-ELOOP regenerative engine braking system, active grille shutters, High Beam Control, Lane Departure Warning System, Smart City Brake Support, Mazda Radar Cruise Control, Forward Obstruction Warning

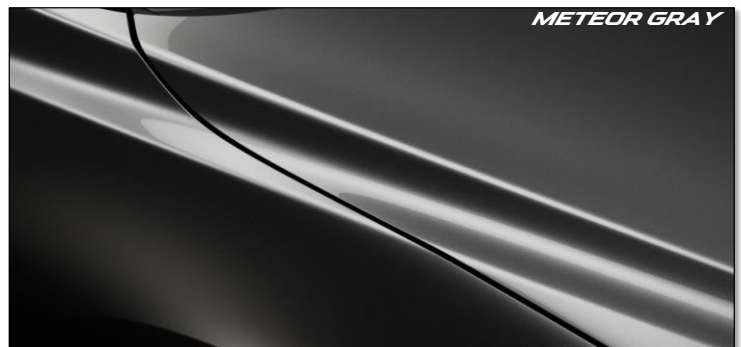
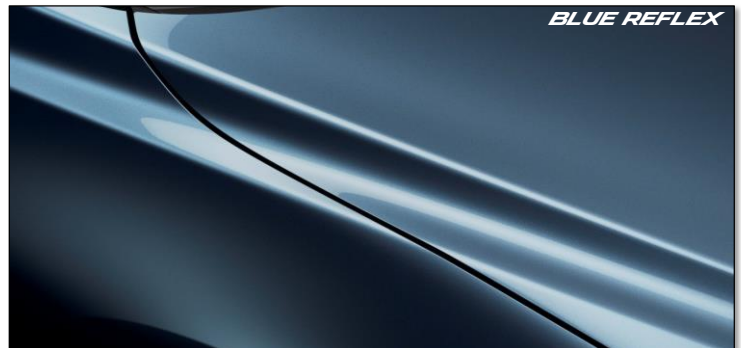
¹ Cannot be combined with 1TE

² Requires 1TE

COLOR AND TRIM 1

Interior Trim Type:		Mazda3i 4-Door							Mazda3s 4-Door			Mazda3i 5-Door						Mazda3s 5-Door		
		i SV		i Sport		i Touring		i GT	s Touring	s GT		i Sport		i Touring		i GT	s Touring	s GT		
		Black Cloth BV0	Sand Cloth BV1	Black Cloth BV0	Sand Cloth BV1	Black Cloth BV0	Sand Cloth BV1	Black Leatherette BV0	Black Leatherette BV0	Black Leather BV0	Almond Leather BV2	Black Cloth BV0	Sand Cloth BV1	Black Cloth BV0	Sand Cloth BV1	Black Leatherette BV0	Black Leatherette BV0	Black Leather BV0	Almond Leather BV2	
41W	Jet Black Mica	●	●	●	●	●	●	●	●	●	●	●	●	●	●	●	●	●		
41V	Soul Red Metallic	●		●		●		●		●		●		●		●		●		
42M	Deep Crystal Blue Mica	●	●	●	●	●	●	●	●	●	●	●	●	●	●	●	●	●		
42B	Blue Reflex Mica	●		●		●		●		●		●		●		●		●		
38P	Liquid Silver Metallic	●		●		●		●		●		●		●		●		●		
42A	Meteor Gray Mica	●		●		●		●	●	●		●		●		●	●	●		
25D	Snowflake White Pearl Mica	●	●	●	●	●	●	●	●	●		●	●	●	●	●	●	●		
42S	Titanium Flash Mica	●	●	●	●	●	●	●	●	●	●	●	●	●	●	●	●	●		

LEGEND:
● = Available



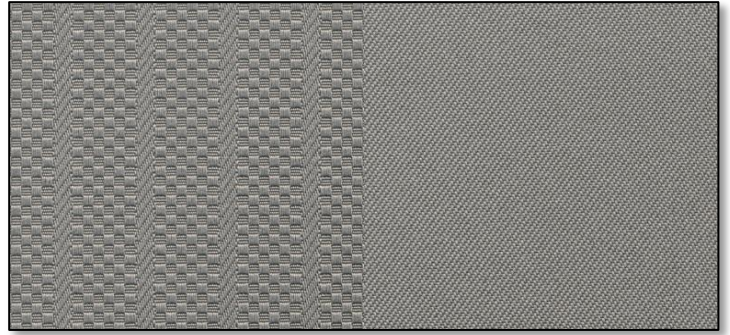
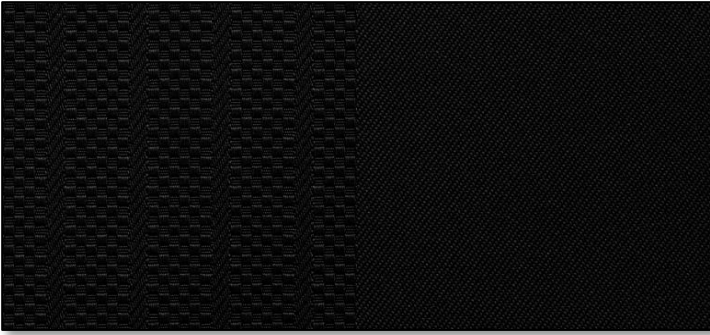
2014 Mazda3

COLOR AND TRIM 2

i SV and i Sport Cloth Trim

Black (BV0)

Sand (BV1)



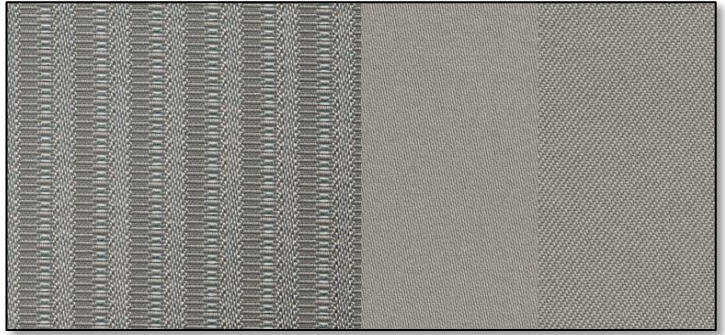
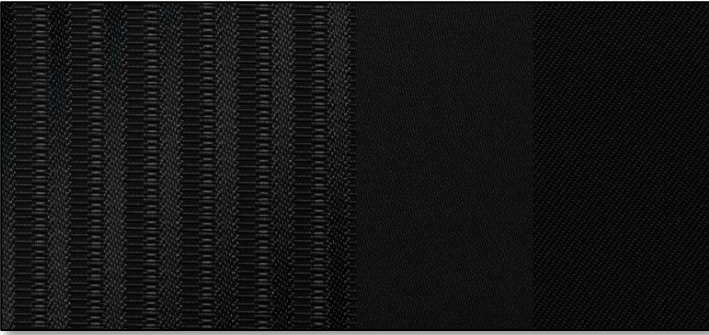
2014 Mazda3

COLOR AND TRIM 2

i Touring Premium Cloth Trim

Black (BV0)

Sand (BV1)



2014 MAZDA3

COLOR AND TRIM 2

i Grand Touring & s Touring Leatherette Trim

Black (BV0)

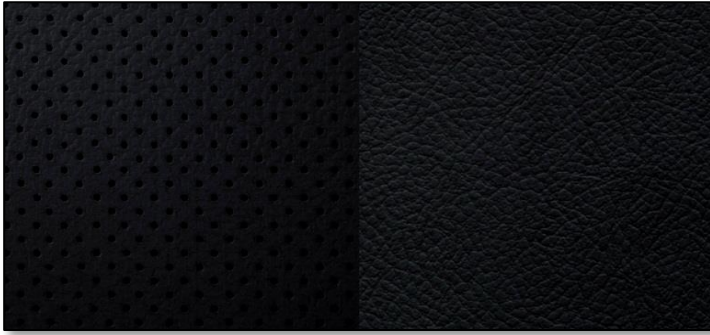


2014 Mazda3

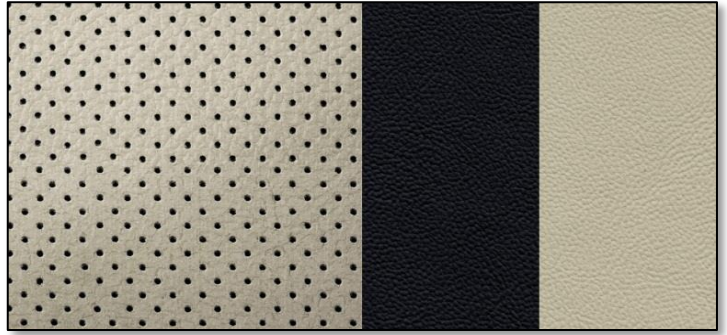
COLOR AND TRIM 2

s Grand Touring Leather Trim

Black (BV0)



Almond (BV2)



SPECIFICATIONS	4-DOOR		5-DOOR	
	<i>i</i>	<i>s</i>	<i>i</i>	<i>s</i>
	All	All	All	All
ENGINE AND ELECTRICAL				
Engine Type	Type-SKYACTIV-G 2.0L DOHC 16-valve 4-cylinder with Variable-Valve Timing	Type-SKYACTIV-G 2.5L DOHC 16-valve 4-cylinder with Variable-Valve Timing	Type-SKYACTIV-G 2.0L DOHC 16-valve 4-cylinder with Variable-Valve Timing	Type-SKYACTIV-G 2.5L DOHC 16-valve 4-cylinder with Variable-Valve Timing
Horsepower (SAE net)	155 @ 6000 rpm	184 @ 5700 rpm	155 @ 6000 rpm	184 @ 5700 rpm
Torque (lb.-ft.)	150 @ 4000 rpm	185 @ 3250 rpm	150 @ 4000 rpm	185 @ 3250 rpm
Redline	6800 RPM	6500 RPM	6800 RPM	6500 RPM
Displacement (cubic inches/cc)	121.9/1998	151.8/2488	121.9/1998	151.8/2488
Bore x Stroke (inches/mm)	3.29 x 3.59/83.5 x 91.2	3.50 x 3.94/89.0 x 100.0	3.29 x 3.59/83.5 x 91.2	3.50 x 3.94/89.0 x 100.0
Compression Ratio	13.0:1			
Fuel System	Advanced Direct Injection			
Recommended Fuel	Regular unleaded			
Oil Type	0W-20 GF5			
Valvetrain	4 valves per cylinder, Variable-Valve Timing			
Engine Block	Aluminum Alloy			
Cylinder Heads	Aluminum Alloy			
Emission Control (FED)	Tier2-BIN5			
Emission Control (CAL = CA, NY, MA, MD, ME, NM, VT, PA, CT, RI, OR, WA, NJ)	ULEV			
Ignition System	Distributor Less Ignition			
Alternator	12V / 100A	12V / 100A [i-ELOOP 12V / 150A]	12V / 100A	12V / 100A [i-ELOOP 12V / 150A]
Battery (cold area)	55D 23L (75D 23L)	55D 23L (75D 23L) [i-ELOOP Q-85]	55D 23L (75D 23L)	55D 23L (75D 23L) [i-ELOOP Q-85]
Starter	12V: 1.0kw	12V: 1.4kw	12V: 1.0kw	12V: 1.4kw
DRIVETRAIN				
Type	NA			
Transmission (MT)	SKYACTIV-MT 6-speed manual	NA	SKYACTIV-MT 6-speed manual	NA
Transmission (AT)	SKYACTIV-DRIVE 6-speed electronically-controlled Sport AT	SKYACTIV-DRIVE 6-speed electronically-controlled Sport AT	SKYACTIV-DRIVE 6-speed electronically-controlled Sport AT	SKYACTIV-DRIVE 6-speed electronically-controlled Sport AT
Clutch Type	MT Single dry plate with diaphragm spring	NA	MT Single dry plate with diaphragm spring	NA
	AT Torque converter with electronic lockup	Torque converter with electronic lockup	Torque converter with electronic lockup	Torque converter with electronic lockup
Ratios (:1)	SKYACTIV-MT		SKYACTIV-MT	
	1st	3.363	1st	3.363
	2nd	1.947	2nd	1.947
	3rd	1.300	3rd	1.300
	4th	1.029	4th	1.029
	5th	0.837	5th	0.837
	6th	0.680	6th	0.680
	Reverse	3.385	Reverse	3.385
	Final Drive	3.850	Final Drive	3.850
	SKYACTIV-DRIVE Sport AT		SKYACTIV-DRIVE Sport AT	
	1st	3.552	1st	3.552
	2nd	2.022	2nd	2.022
	3rd	1.452	3rd	1.452
	4th	1.000	4th	1.000
	5th	0.708	5th	0.708
	6th	0.599	6th	0.599
	Reverse	3.893	Reverse	3.893
	Final Drive	3.591	Final Drive	3.591
CHASSIS				
Body Type	5- passenger, 5-door sedan		5- passenger, 5-door hatchback	
Front Suspension	Independent, MacPherson strut		Independent, MacPherson strut	
Rear Suspension	Independent, Multi-link		Independent, Multi-link	
Shock Absorbers	Twin tube		Twin tube	
Steering Type	Rack-and-pinion		Rack-and-pinion	
Power Assist	Electric Power Assist Steering		Electric Power Assist Steering	
Overall Steering Ratio	14:1		14:1	
Steering Wheel Turns-to-Lock	2.57		2.57	
Turning Circle, Curb-to-Curb (Radius - feet/m)	17.39 / 5.3		17.39 / 5.3	
Turning Circle, Wall-to-Wall (Diameter - feet/m)	37.07 / 11.30		37.07 / 11.30	
Braking System	Power assist, Anti-lock Brake System w/ Electronic Brakeforce Distribution & Brake Assist		Power assist, Anti-lock Brake System w/ Electronic Brakeforce Distribution & Brake Assist	
Front Brakes	Ventilated discs	11.02 inches	Ventilated discs	11.02 inches
Rear Brakes	Solid discs	10.43 inches	Solid discs	10.43 inches
Parking Brake	Mechanical, hand-operated on rear wheels		Mechanical, hand-operated on rear wheels	
Wheels	16X6.5J	18X7J	16X6.5J	18X7J
Tires	205/60R16 91H all-season	215/45R18 89W all-season	205/60R16 91H all-season	215/45R18 89W all-season
Brand	Bridgestone, Yokohama	Dunlop	Bridgestone, Yokohama	Dunlop
Tire Inflation Pressure, Fr/Rr (psi)	36 / 36	36 / 36	36 / 36	36 / 36
Temporary Spare Tire	T125/70D16		T125/70D16	
Curb Weight (lbs.)	MT 2781	NA 2982	MT 2797	NA 3002
	AT 2848	2982	AT 2855	3002

SPECIFICATIONS

	4-DOOR		5-DOOR	
	<i>i</i>	<i>s</i>	<i>i</i>	<i>s</i>
	All	All	All	All
FUEL ECONOMY				
EPA Mileage (City / Highway / Combined)				
MT	29 / 41 / 33	NA	29 / 40 / 33	NA
AT	30 / 41 / 34	28 / 39 / 32 (i-ELOOP 28 / 39 / 32)	30 / 40 / 33	27 / 37 / 31 (i-ELOOP 28 / 38 / 32)
CAPACITIES				
Crankcase: No exchange OF/ Exchange OF (U.S. quarts)	4.2 / 4.4	4.5 / 4.8	4.2 / 4.4	4.5 / 4.8
Engine Coolant (U.S. quarts)	6.7 MT / 6.9 AT	7.2	6.7 MT / 6.9 AT	7.2
Fuel Tank Capacity (gallons)	13.2			
EPA Passenger Volume (cubic feet)	96.3		96.4	
EPA Cargo Volume (cubic feet)	12.4		20.2	
EPA Cargo Volume with rear seats down, (cubic feet)	NA		47.1	
EPA Total Volume (cubic feet)	108.7		116.2	
EPA Vehicle Size Category	Compact (Small Car)			
EXTERIOR DIMENSIONS				
Wheelbase (inches)	106.3			
Track, Front (inches)	61.2			
Track, Rear (inches)	61.4			
Length (inches) w/License Plate Holder	180.3		175.6	
Width (inches) w/o Body Side Protector	70.7			
Height, unladen (inches)	57.3			
Minimum Ground Clearance, laden (inches)	6.1			
Weight Distribution, % front:rear	MT: 59 / 41 AT: 60 / 40	MT: NA AT: 61 / 39	MT: 59 / 41 AT: 60 / 40	MT: NA AT: 61 / 39
Coefficient of Drag (Cd)	0.26	0.26 [i-ELOOP 0.255]	0.28	0.28 [i-ELOOP 0.275]
Top Speed (MPH) with speed limiter	130	130	130	130
INTERIOR DIMENSIONS				
Headroom, front / rear without Moonroof (inches)	38.6 / 37.6			
Headroom, front / rear with Moonroof (inches)	37.6 / 37.5			
Leg Room, front / rear (inches)	42.2 / 35.8			
Shoulder Room, front/rear (inches)	57.2 / 54.4			
Hip Room, front/rear (inches)	55.5 / 53.5			
Rear Knee Clearance (inches)	0.6			